

## SKYE INSTRUMENTS LIMITED

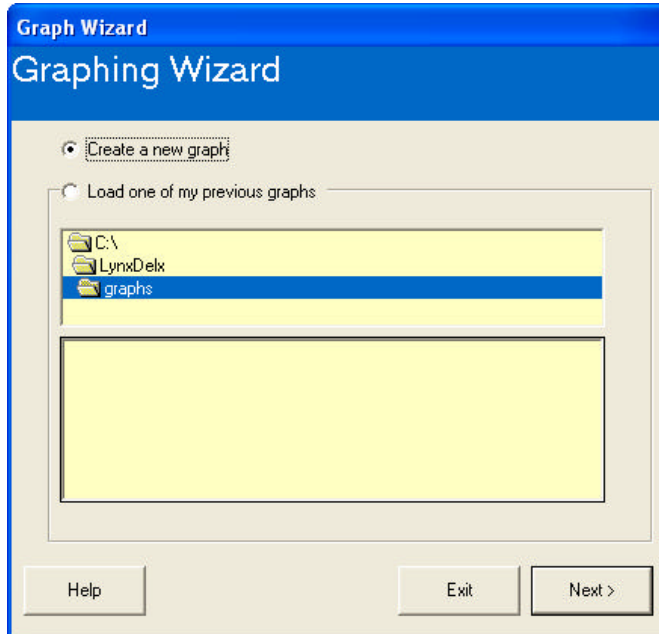
21 Ddole Enterprise Park, Llandrindod Wells, Powys, LD1 6DF UK

Tel: +44 (0) 1597 824811 Fax: +44 (0) 1597 824812

Email: [skyeemail@skyeinstruments.com](mailto:skyeemail@skyeinstruments.com) Web: <http://www.skyeinstruments.com>

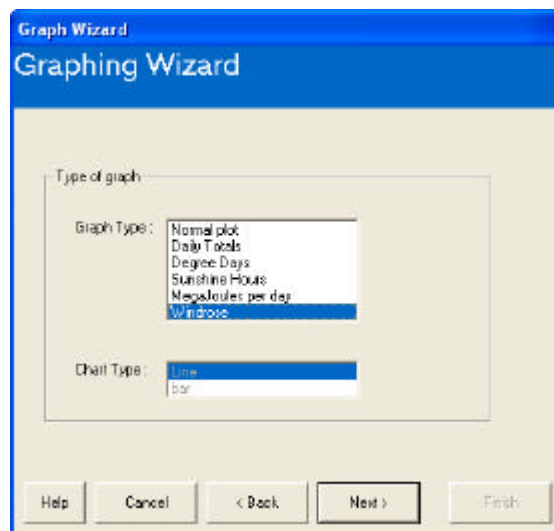
## SKYELYNX DELUXE Graphing a Windrose

Click on Data and graphing to launch the graphing wizard, which will guide you through the process.

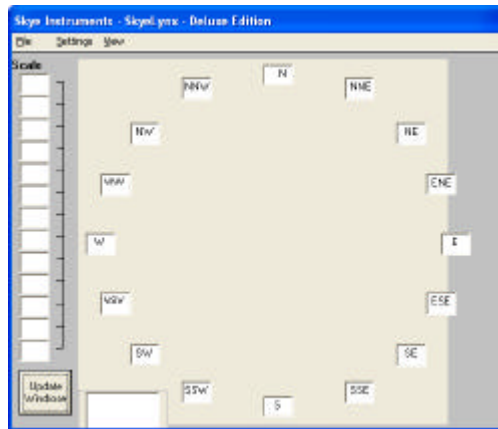


From the Graphing Wizard, you can choose to create a new graph, or load a previously saved template. Initially you will need to “Create a new graph” so click on this button and then Next. You may click on Back or help at any time during the Graphing Wizard routine as required.

### Graph Type



Choose the Windrose option from the Graph Type menu and click Next.

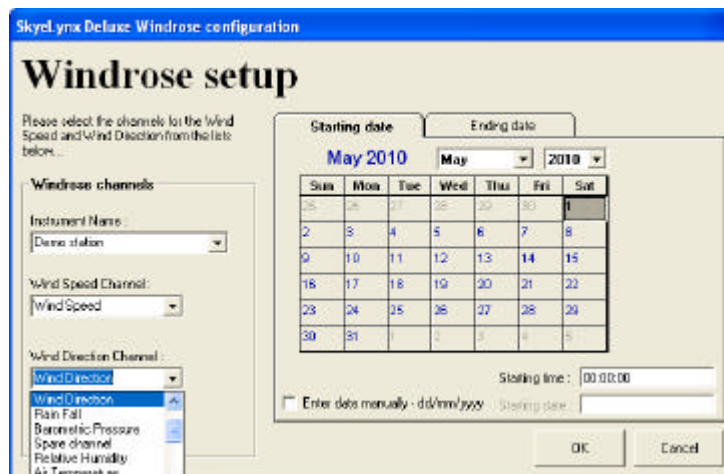


## Plotting the Windrose

In order to plot a windrose, you must specify the following information.

- **Which Instrument Profile** you are plotting data from so that the channel names, and the datafile identifier can be retrieved.
- **The channel that contains the Wind Speed data** so that we can retrieve the readings from the data files (please ensure a tick has been added to the Wind Speed channel in the Instrument Profile – see Appendix 1 for details).
- **The channel that contains the Wind Direction data** so that we can retrieve the readings from the data files (please ensure a tick has been added to the Wind Direction channel in the Instrument Profile – see Appendix 1 for details).
- **The Starting and Ending Dates / Times** for the WindRose

To specify the above, click “Settings” on this main WindRose form then move down to “Change Instrument Data”.

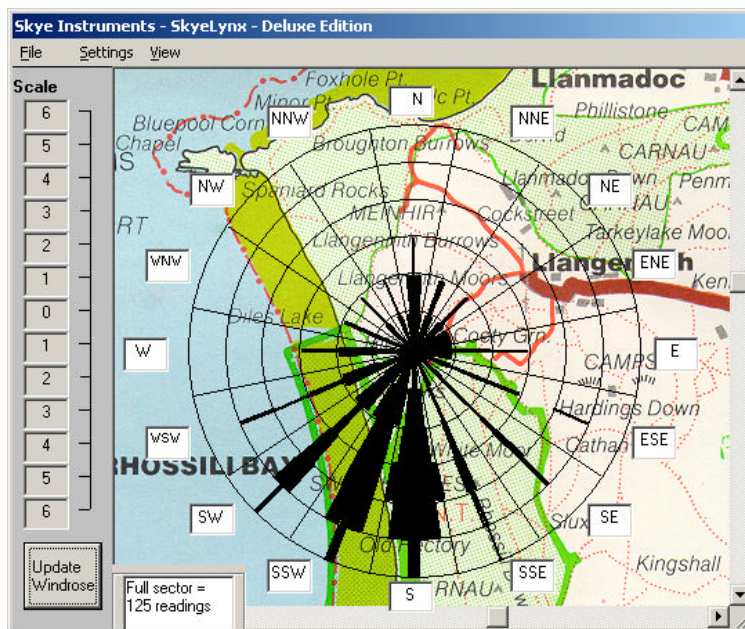
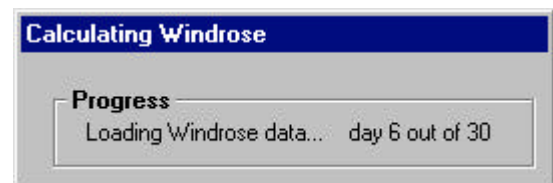


First specify the Instrument Name / Profile of the station. Next select the Wind Speed and Wind Direction channels for your instrument from the drop down menus as shown above.

Use the two tabs, each with its own calendar, to select a Start and End date. You may also choose Starting and Ending times if you wish to specify more accurately the period you are interested in. By default these are set to 00:00:00 and 23:59:59, i.e. midnight to midnight. Click OK if you are happy with your selections.

### Updating the Windrose

You must actively update your WindRose after choosing or changing the data. Do this by pressing the “Update” button as shown opposite. You will see the progress of the data calculation in the window above the WindRose. Note that every day of the WindRose will probably take about one second to calculate. If therefore you are viewing data spread over a very large period, then you can expect to wait for a while whilst the data is retrieved from the files, and the WindRose calculated.



Wind Data			
N	8.3%	S	21.8%
NNE	3.8%	SSW	20.5%
NE	3%	SW	11.5%
ENE	5.7%	WSW	5%
E	5.4%	W	3.6%
ESE	1.6%	WNW	0.8%
SE	2.1%	NW	1.3%
SSE	3.8%	NNW	0.9%

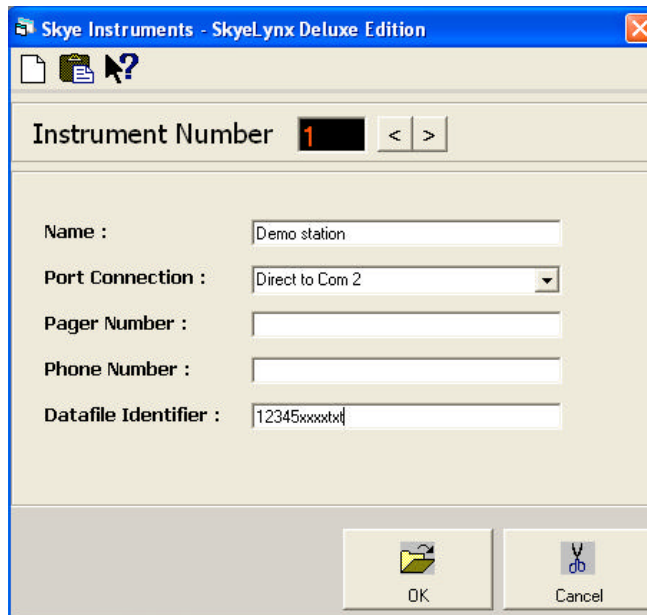
Source Details	
Instrument Name :	Hog at 21
Starting at :	8/1/2006 at 00:00:00
Ending at :	14/1/2006 at 23:59:59

Click the View menu and choose View Direction Distribution to see the table above.

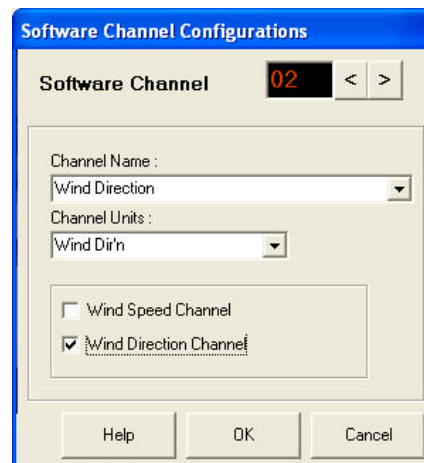
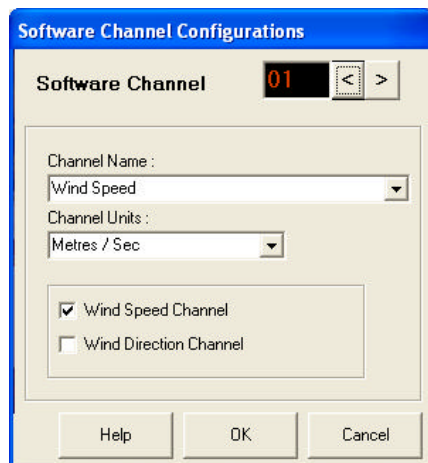
You can choose to overlay the windrose on your own map or background if you wish, by choosing Settings AND Change background picture. Please see the SkyeLynx Deluxe manual Chapter 7.7.2 for full details.

## APPENDIX 1 – SETTING UP INSTRUMENT PROFILES FOR WINDROSES

From the main window, choose Settings and Configure Instrument Profiles. Choose the middle icon labelled Software Channel Configuration



Make sure there is a tick the check box for both Wind Speed and Wind Direction channels as shown. This will ensure the software handles the data from these channels correctly in the WindRose feature.



Click OK and Yes to confirm to exit.